



### Contact Information

**Address:**

B-9, 3rd Floor,  
Above B.K. Sweets,  
Dwarka More, Dwarka,  
Delhi-110059  
India

**Phone:** +91-9266749755

**Email:** [info@meriawaz.org](mailto:info@meriawaz.org)

**Website:** [www.meriawaz.org](http://www.meriawaz.org)

# ORGANIZATION PROFILE





# **MERI AWAZ TRUST**

## **Message from the Chairman**

Dear Friends and Supporters,

It is with immense gratitude and unwavering dedication that I address you today on behalf of Meri Awaz Trust. Since our establishment, our mission has been clear: to uplift and empower rural communities across India by enhancing access to education, healthcare, and sustainable livelihoods. Our journey has been one of passion, resilience, and a steadfast commitment to creating lasting positive change in the lives of those we serve.

### **Our Journey and Achievements**

From our humble beginnings in Dwarka, Delhi, Meri Awaz Trust has grown into a beacon of hope for countless rural families. We have successfully established and supported numerous educational institutions, ensuring that children and youth in underserved areas receive quality education and life skills training. Our initiatives in healthcare, including mobile health clinics and telemedicine services, have bridged the gap in medical access, providing essential services to those in the most remote regions.

In the realm of sustainable livelihoods, our programs in sustainable agriculture, renewable energy, and farmers' training have not only increased productivity but also fostered resilience against the challenges posed by climate change. By integrating innovative technologies such as drone technology and digital literacy programs, we have empowered individuals with the tools and knowledge necessary to navigate and thrive in a rapidly evolving world.

### **Our Core Values**

At the heart of Meri Awaz Trust lie our core values: Integrity, Transparency, Sustainability, Empowerment, Innovation, and Inclusivity. These values guide every decision we make and every program we implement. We believe in conducting our work with honesty and ethical practices, maintaining open communication with our stakeholders, and ensuring that our initiatives are environmentally sustainable and socially inclusive.

### **Looking Ahead**

As we look to the future, our vision remains steadfast—to create self-sufficient and thriving rural communities where every individual has the opportunity to realize their full potential. We aim to expand our reach, establish more educational and healthcare facilities, and implement advanced technological solutions to further enhance our impact. Our goal is to empower 100,000 individuals through our comprehensive programs within the next five years, fostering a ripple effect of positive change that extends beyond immediate communities.

### **A Call to Action**

None of our achievements would be possible without the unwavering support of our partners, donors, volunteers, and the communities we serve. I extend my heartfelt thanks to each one of you for believing in our mission and contributing to our success. However, our work is far from complete. The challenges facing rural India are vast and multifaceted, and it is only through continued collaboration and collective effort that we can overcome them.

I invite you to join us in this noble endeavor. Whether through donations, volunteering, or spreading awareness, your involvement can make a significant difference. Together, we can build resilient, self-sufficient communities where education, health, and sustainable living are accessible to all.

Thank you for standing with us.

Warm regards,

**Banaja Mishra**  
**Chairman**





## About Us

**Meri Awaz Trust** is a pioneering non-profit organization dedicated to the holistic upliftment of rural communities across India. Founded with a steadfast commitment to fostering sustainable development, Meri Awaz Trust operates from its headquarters in Dwarka, Delhi, under the visionary leadership of **Banaja Mishra**, the Founder and Executive Director. Our mission is to empower rural populations by enhancing access to essential services such as education and healthcare, promoting sustainable livelihoods, and integrating innovative technologies that drive long-term resilience and self-sufficiency. At the heart of our work lies the belief that every individual, regardless of their geographical location, deserves the opportunity to thrive and contribute meaningfully to their community and the broader society.

Education forms the cornerstone of **Meri Awaz Trust's** initiatives. We recognize that quality education is a fundamental right and a critical driver of personal and community development. To this end, we have established and supported numerous schools and learning centers in underserved and remote areas, ensuring that children from marginalized backgrounds have access to a conducive learning environment. Our Rural Education Empowerment Program not only focuses on building infrastructure but also emphasizes the importance of life skill education, which equips students with essential interpersonal and decision-making abilities necessary for their personal and professional growth. Additionally, we provide scholarships and educational materials to underprivileged students, alleviating financial barriers that might otherwise hinder their educational pursuits. Understanding the pivotal role that digital literacy plays in today's world, **Meri Awaz Trust** also offers comprehensive computer literacy classes. These classes are designed to bridge the digital divide, enabling individuals to navigate and utilize modern technologies effectively, thereby opening up new avenues for education and employment.



Healthcare is another critical area of focus for **Meri Awaz Trust**. We are deeply committed to improving the overall health and well-being of rural populations by facilitating access to essential healthcare services and promoting preventive care. Our Healthcare Outreach Initiative organizes mobile health clinics that bring medical services directly to remote communities, ensuring that even the most isolated individuals receive necessary medical attention. These clinics provide a range of services, including general health check-ups, vaccinations, and treatments for common ailments. Moreover, we conduct health education seminars that focus on preventive care and healthy living, empowering community members with the knowledge to make informed health choices. A significant aspect of our healthcare efforts is dedicated to adolescent reproductive and sexual health. By delivering comprehensive education and services to adolescents, we aim to promote informed and healthy decisions, thereby reducing the incidence of reproductive health issues and fostering a healthier future generation.

Sustainable livelihoods are essential for the long-term prosperity of rural communities, and Meri Awaz Trust is at the forefront of promoting sustainable agricultural practices and renewable energy solutions. Our Sustainable Agriculture Project implements training sessions that educate farmers on sustainable farming techniques, enhancing productivity while ensuring environmental conservation. We provide hands-on training and distribute modern agricultural implements, enabling farmers to adopt more efficient and resilient farming methods. By promoting organic farming and water conservation practices, we help farmers mitigate the adverse effects of climate change and improve their agricultural output. Additionally, our Renewable Energy initiatives introduce and implement renewable energy solutions such as solar panels and biogas systems in rural households and farming operations. These solutions not only reduce reliance on non-renewable energy sources but also lower energy costs, contributing to the economic stability of the communities we serve.



Technology integration is a key component of our strategy to drive sustainable development in rural areas. Meri Awaz Trust leverages advanced technologies such as drone technology to revolutionize agricultural practices. Drones are utilized for precision agriculture, crop monitoring, and enhancing agricultural productivity by providing real-time data on crop health, soil conditions, and irrigation needs. This technological





advancement allows farmers to make informed decisions, optimize resource use, and increase crop yields. In addition to drone technology, we integrate digital tools into our education and healthcare programs, creating digital platforms that streamline the dissemination of information and improve service delivery. These digital solutions make education and healthcare more accessible and efficient, ensuring that rural communities are not left behind in the digital revolution.

Our commitment to empowering youth extends to both in-school and out-of-school adolescents through our Adolescent Health and Life Skills Education programs. These programs provide comprehensive reproductive and sexual health education, addressing critical issues such as puberty, contraception, sexually transmitted infections, and healthy relationships. By delivering life skills workshops, we equip youth with the necessary tools to navigate the complexities of adolescence, fostering resilience, self-confidence, and the ability to make informed decisions. These programs are tailored to meet the unique needs of each community, ensuring that they are culturally sensitive and effective in promoting the well-being of young people.

Under the dynamic leadership of Banaja Mishra, Meri Awaz Trust has successfully initiated and implemented numerous programs that have significantly impacted rural communities. Banaja Mishra's extensive experience in non-profit management and her unwavering passion for rural development have been instrumental in driving the trust's mission forward. Her visionary approach ensures that Meri Awaz Trust remains responsive to the evolving needs of the communities it serves, continuously adapting and expanding its programs to maximize impact. Under her guidance, the trust has not only fostered sustainable growth and empowerment but has also built strong partnerships with local communities, government bodies, and other organizations to amplify its efforts and reach.

The impact of Meri Awaz Trust is profound and far-reaching. We have established numerous schools and educational centers, reaching thousands of students annually and providing them with the tools they need to succeed academically and personally. Our



healthcare initiatives have conducted countless health camps, benefiting thousands of individuals each year by providing essential medical services and health education. In the agricultural sector, we have trained hundreds of farmers in sustainable practices and distributed modern field implements, significantly enhancing agricultural productivity and resilience. The deployment of drone technology across farming communities has resulted in notable increases in crop yields, demonstrating the tangible benefits of technological integration. Additionally, our renewable energy installations have provided sustainable and cost-effective energy solutions to numerous households, reducing their reliance on non-renewable sources and promoting environmental sustainability.

Looking ahead, Meri Awaz Trust envisions a rural India where every individual has the opportunity to achieve their full potential through access to quality education, robust healthcare, sustainable livelihoods, and technological empowerment. Our future goals are ambitious yet attainable, as we strive to expand our educational programs by increasing the number of schools and learning centers, thereby reaching more rural children. We aim to enhance healthcare infrastructure by building permanent healthcare facilities in underserved areas, ensuring that high-quality medical services are readily available. Advancing technological integration remains a priority, as we seek to incorporate more advanced technologies to further support agricultural and educational advancements. Strengthening community engagement is also a key objective, as we work to foster stronger partnerships with local communities, ensuring that our development efforts are sustainable, inclusive, and culturally appropriate.

Meri Awaz Trust also recognizes the importance of collaboration and invites support from individuals, corporations, and other organizations to join us in our mission. Whether through donations, volunteering, or strategic partnerships, every contribution plays a vital role in making a significant difference in the lives of rural communities. By working together, we can create a ripple effect of positive change, ensuring that the benefits of our programs reach every corner of rural India.





In essence, Meri Awaz Trust is more than just an organization; it is a movement dedicated to being the voice of rural communities. We strive to ensure that every individual, regardless of their circumstances, has the opportunity to achieve their dreams and contribute to the prosperity of their community. Through our comprehensive and multifaceted approach, we are building resilient and self-sufficient societies where education, health, and sustainable living are accessible to all. As we continue to grow and evolve, our commitment to uplifting rural communities remains unwavering, driving us to explore new horizons and implement innovative solutions that address the most pressing challenges faced by these communities. With a clear vision, a dedicated team, and the support of our partners and stakeholders, Meri Awaz Trust is poised to create lasting and meaningful change, transforming the lives of millions and paving the way for a brighter, more equitable future for rural India.





- “To empower rural communities across India by enhancing their access to essential services. We believe that education and healthcare are fundamental rights that should be available to all, regardless of their geographical location”.



“Meri Awaz Trust envisions a rural India where every individual has seamless access to quality education and healthcare, fostering empowered, self-sufficient, and thriving communities nationwide”.







## Objectives

Meri Awaz Trust is committed to achieving sustainable and impactful development in rural communities through a comprehensive set of objectives aligned with our mission and vision. Our objectives are designed to address the multifaceted challenges faced by rural populations and to create lasting positive change. Below are the key objectives of Meri Awaz Trust:

1. Enhance Access to Quality Education
2. Improve Healthcare Access and Outcomes
3. Promote Sustainable Livelihoods and Agricultural Resilience
4. Integrate Innovative Technologies for Development
5. Empower Youth through Education and Life Skills
6. Foster Community Engagement and Partnerships
7. Ensure Financial Sustainability and Transparency
8. Measure Impact and Continuously Improve Programs
9. Promote Environmental Sustainability
10. Enhance Organizational Capacity and Governance

## Our Innovative Projects and Programs

Meri Awaz Trust is at the forefront of driving transformative change in rural communities through a suite of innovative projects and programs. These initiatives are meticulously designed to address the multifaceted challenges faced by rural populations, leveraging cutting-edge technologies and sustainable practices to ensure long-term impact and resilience. Below are some of our flagship innovative projects and programs:

**Precision Agriculture with Drone Technology:** This project integrates advanced drone technology into traditional farming practices to enhance agricultural productivity and sustainability. Drones are employed for various purposes, including crop monitoring, soil analysis, irrigation management, and pest control.

**Impact:** Farmers using precision agriculture techniques have reported up to a 20% increase in crop yields and a significant reduction in input costs. The project fosters sustainable farming practices, enhancing resilience against climate variability and environmental challenges.



**Renewable Energy Solutions for Rural Households:** This initiative focuses on the deployment of renewable energy technologies, such as solar panels and biogas systems, in rural households and agricultural operations. The goal is to reduce dependence on non-renewable energy sources, lower energy costs, and promote environmental sustainability.

**Impact:** The renewable energy projects have empowered over 1,000 rural households with sustainable energy solutions, resulting in significant cost savings and a reduction in carbon emissions. Additionally, biogas systems have improved waste management practices and provided an alternative income source for farmers.

**Digital Literacy and E-Learning Platforms:** Recognizing the pivotal role of digital literacy in modern education and economic opportunities, this program provides comprehensive digital training and establishes e-learning centers in rural areas.

**Impact:** Thousands of rural youth and adults have gained essential digital skills, enhancing their employability and enabling them to engage with broader educational resources. The e-learning platforms have bridged the educational gap, providing continuous learning opportunities despite geographical and infrastructural constraints.

**Adolescent Health and Life Skills Education:** This program delivers comprehensive reproductive and sexual health education alongside life skills training to adolescents, both in-school and out-of-school, fostering informed and healthy decision-making.

**Impact:** The program has reached over 5,000 adolescents, significantly improving their knowledge and attitudes towards reproductive health and life skills. This holistic approach has contributed to reduced incidences of teenage pregnancies, sexually transmitted infections, and improved overall well-being among youth participants.

**Sustainable Farming Training Programs:** Focused on promoting sustainable agricultural practices, this initiative provides farmers with training and resources to adopt eco-friendly and efficient farming methods.

**Impact:** Over 2,000 farmers have adopted sustainable farming practices, resulting in improved soil health, increased crop diversity, and enhanced resilience against climate change. The program has also contributed to higher agricultural productivity and income stability for participating farmers.





**6. Mobile Health Clinics with Telemedicine Integration:** To bridge the gap in healthcare access, this project deploys mobile health clinics equipped with telemedicine capabilities, bringing medical services directly to remote and underserved communities.

**Impact:** The mobile health clinics have provided essential medical services to over 10,000 individuals annually, significantly improving health outcomes in remote areas. Telemedicine integration has enhanced access to specialist care, reduced travel time and costs for patients, and ensured timely medical interventions.

**7. Smart Classrooms and E-Learning Centers:** This initiative transforms traditional classrooms into smart learning environments equipped with digital tools and resources to enhance the educational experience for rural students.

**Impact:** Smart classrooms have revolutionized the learning experience for over 3,000 students, making education more interactive, engaging, and aligned with modern pedagogical standards. Teachers are now better equipped to deliver quality education, and students have access to a wealth of digital resources that enhance their learning outcomes.

**8. Agricultural Field Implements Training and Support:** This program focuses on training farmers in the effective use of modern agricultural implements and machinery, enhancing their efficiency and productivity.

**Impact:** Thousands of farmers have benefited from improved efficiency and reduced labor costs through the adoption of modern agricultural implements. The training has led to increased agricultural productivity, better crop management, and enhanced overall farm sustainability.

**9. Community-Based Renewable Energy Projects:** This initiative involves the development and implementation of renewable energy projects at the community level, fostering collective ownership and management of sustainable energy resources.

**Impact:** Community-based renewable energy projects have provided sustainable energy solutions to numerous villages, enhancing energy security, reducing environmental impact, and fostering a sense of community ownership and responsibility towards energy resources.



**10. Youth Empowerment and Leadership Development:** This program aims to nurture the leadership potential of rural youth, equipping them with the skills and opportunities to become change-makers in their communities.

**Impact:** The youth empowerment programs have cultivated a new generation of leaders who are actively involved in community projects, entrepreneurship, and advocacy. This has led to increased community participation, innovation, and sustainable development driven by empowered and capable young individuals.

**11. Integrated Water Management Systems:** This project focuses on the development and implementation of sustainable water management practices to ensure the availability and efficient use of water resources in rural areas.

**Impact:** Integrated water management systems have significantly improved water availability and usage efficiency in over 500 rural communities. These practices have enhanced agricultural productivity, ensured reliable household water supply, and contributed to the sustainable management of local water resources.

**12. Eco-Friendly Agricultural Practices Initiative:** This initiative promotes the adoption of environmentally friendly agricultural practices to protect natural resources and ensure long-term sustainability of farming activities.

**Impact:** The eco-friendly agricultural practices initiative has led to improved soil health, increased biodiversity, and enhanced sustainability of farming operations in participating communities. Farmers have reported better crop quality, reduced input costs, and a healthier environment, contributing to the overall resilience of their agricultural livelihoods.

**13. Tele-Education and Remote Learning Support:** This program leverages telecommunications technology to provide remote learning support to students in rural areas, ensuring continuity of education despite geographical and infrastructural barriers.

**Impact:** Tele-education and remote learning support have ensured that over 3,000 students continue to receive quality education despite challenges such as distance and limited infrastructure. The program has maintained educational continuity, reduced dropout rates, and provided students with access to a wider range of learning resources and opportunities.





**14. Climate Resilience and Adaptation Programs:** Focused on enhancing the resilience of rural communities to climate change, this program implements strategies and practices that mitigate the adverse effects of climate variability and promote adaptive capacity.

**Impact:** Climate resilience and adaptation programs have empowered rural communities to better withstand and recover from climate-related challenges. Enhanced adaptive capacity has led to reduced vulnerability, sustained agricultural productivity, and strengthened community cohesion in the face of environmental uncertainties.

**15. Cultural Preservation and Community Heritage Projects:** This initiative aims to preserve and promote the cultural heritage of rural communities, fostering a sense of identity and pride while supporting sustainable tourism and economic opportunities.

**Impact:** Cultural preservation and community heritage projects have revitalized local traditions, strengthened community identity, and generated sustainable income through tourism. These efforts have not only preserved invaluable cultural assets but also empowered communities by celebrating and leveraging their unique heritage for economic and social development.

Meri Awaz Trust's innovative projects and programs are a testament to our unwavering commitment to uplifting rural communities through sustainable and forward-thinking solutions. By integrating technology, fostering education, promoting health and well-being, and encouraging sustainable practices, we are creating resilient and self-sufficient societies where individuals can thrive. Our holistic approach ensures that every aspect of rural life is addressed, paving the way for enduring positive change and a brighter future for generations to come.



## Geographical Reach

Meri Awaz Trust aims to extend its reach across diverse geographical regions in India, prioritizing areas with the greatest need for development and support. Our focus includes, but is not limited to, the following states:

- **North India:** Delhi, Haryana, Uttar Pradesh, Punjab
- **West India:** Maharashtra, Gujarat, Rajasthan
- **East India:** Bihar, Odisha, West Bengal
- **Central India:** Madhya Pradesh, Chhattisgarh

We address a wide spectrum of rural challenges, from agricultural productivity and educational disparities to healthcare access and technological integration.

## Beneficiary Demographics

Our programs are designed to serve a diverse range of beneficiaries, including:

- **Children and Youth:** Ensuring access to quality education and life skills training for future generations.
- **Adolescents:** Providing reproductive and sexual health education to foster informed and healthy decision-making.
- **Farmers:** Enhancing agricultural practices and sustainability to improve livelihoods and resilience.
- **Women and Girls:** Empowering women through education, health services, and economic opportunities.
- **Elderly and Vulnerable Populations:** Ensuring access to healthcare and support services for the most vulnerable members of rural communities.



## Timeframe and Milestones:

### Short-Term Goals (1-2 Years):

- ❑ Establish 20 new schools and learning centers.
- ❑ Deploy 10 mobile health clinics.
- ❑ Train 1,000 farmers in sustainable practices.
- ❑ Install renewable energy solutions in 500 households.

### Medium-Term Goals (3-5 Years):

- ❑ Expand digital literacy programs to 50,000 individuals.
- ❑ Implement drone technology in 100 farming communities.
- ❑ Develop 10 e-learning centers with smart classroom facilities.
- ❑ Support the creation of 500 youth-led entrepreneurial ventures.

### Long-Term Goals (5-10 Years):

- ❑ Achieve sustainable operations across 15 states in India.
- ❑ Empower 100,000 individuals through comprehensive education and healthcare programs.
- ❑ Establish renewable energy cooperatives in 500 rural communities.
- ❑ Ensure environmental sustainability and climate resilience in over 10,000 hectares of agricultural land.



## Collaborations and Partnerships

To effectively expand our scope of work and achieve our targets, Meri Awaz Trust actively seeks collaborations and partnerships with:

- ⇒ **Government Agencies**
- ⇒ **Non-Governmental Organizations (NGOs)**
- ⇒ **Private Sector**
- ⇒ **Academic Institutions**
- **Community Leaders**

## Sustainability and Scalability

Meri Awaz Trust is committed to ensuring that our initiatives are sustainable and scalable, allowing for long-term impact and the ability to expand our reach. Key strategies include:

- ❑ **Capacity Building**
- ❑ **Resource Optimization**
- ❑ **Innovative Solutions**
- ❑ **Community Ownership**





## Working Modalities

Meri Awaz Trust operates through a well-defined set of working modalities that ensure the effective implementation of its programs and initiatives. These modalities encompass the organizational structure, project lifecycle, stakeholder engagement, funding mechanisms, monitoring and evaluation processes, and sustainability strategies. By adhering to these modalities, Meri Awaz Trust ensures that its efforts are coordinated, impactful, and aligned with its mission and vision of uplifting rural communities in India.







## 1. Organizational Structure

### a. Governance and Leadership:

- **Board of Trustees:** The governing body responsible for strategic oversight, policy formulation, and ensuring adherence to the trust's mission and values. The board comprises experienced professionals from diverse fields, including education, healthcare, agriculture, technology, and non-profit management.
- **Executive Team:** Led by Banaja Mishra, the Founder and Executive Director, the executive team manages day-to-day operations, program development, and implementation. The team includes department heads for Education, Healthcare, Sustainable Livelihoods, Technology Integration, Youth Empowerment, Finance, and Monitoring & Evaluation.

### b. Operational Departments:

- **Education Department:** Focuses on establishing schools, implementing life skills education, and promoting digital literacy.
- **Healthcare Department:** Manages mobile health clinics, adolescent reproductive health programs, and health education initiatives.
- **Sustainable Livelihoods Department:** Oversees agricultural resilience projects, renewable energy solutions, and farmers' training programs.
- **Technology Integration Department:** Handles the deployment of drone technology, development of digital platforms, and telemedicine services.
- **Youth Empowerment Department:** Develops life skills training, leadership programs, and entrepreneurship initiatives.
- **Finance and Administration:** Manages budgeting, financial reporting, resource allocation, and administrative support.
- **Monitoring & Evaluation (M&E):** Ensures program effectiveness through data collection, impact assessment, and continuous improvement.

## 2. Project Identification and Planning

### a. Needs Assessment:

- Conduct thorough assessments in target rural areas to identify specific needs related to education, healthcare, agriculture, technology, and youth empowerment.
- Utilize surveys, focus group discussions, and consultations with local leaders and community members to gather comprehensive data.

### b. Strategic Planning:

- Develop strategic plans based on needs assessments, aligning projects with the trust's mission and objectives.
- Prioritize initiatives that address the most critical and pressing issues in each community.

### c. Goal Setting:

- Establish clear, measurable goals and objectives for each project, ensuring they are Specific, Measurable, Achievable, Relevant, and Time-bound (SMART).



**d. Resource Allocation:**

- Allocate resources efficiently, ensuring that each project is adequately funded and staffed to achieve its goals.

**3. Implementation Process**

**a. Project Design:**

- Develop detailed project plans outlining activities, timelines, responsibilities, and expected outcomes.
- Incorporate best practices and innovative approaches to maximize impact.

**b. Capacity Building:**

- Train staff and community members in relevant skills and knowledge to ensure effective project execution.
- Provide ongoing professional development to enhance team capabilities.

**c. Execution:**

- Implement projects in phases, ensuring smooth progression from initiation to completion.
- Utilize project management tools and methodologies to track progress and address challenges promptly.

**d. Community Involvement:**

- Engage local communities in the implementation process, fostering ownership and ensuring that projects are culturally appropriate and sustainable.
- Encourage active participation through community meetings, workshops, and collaborative decision-making.

**4. Stakeholder Engagement**

**a. Internal Stakeholders:**

- Foster a collaborative and inclusive organizational culture, encouraging input and feedback from all team members.
- Promote transparency and open communication within the organization to enhance coordination and morale.

**b. External Stakeholders:**

- **Beneficiaries:** Prioritize the needs and aspirations of rural communities, ensuring that programs are tailored to their specific contexts.
- **Partners and Collaborators:** Build strong partnerships with government agencies, other non-governmental organizations (NGOs), academic institutions, and private sector entities to leverage resources and expertise.
- **Donors and Funders:** Maintain regular communication with donors, providing updates on project progress and demonstrating the impact of their contributions.
- **Local Leaders and Influencers:** Collaborate with community leaders to gain trust, facilitate program acceptance, and ensure alignment with local values and traditions.





## 5. Funding and Resource Mobilization

### a. Diverse Funding Sources:

- **Grants:** Apply for grants from national and international funding agencies, foundations, and philanthropic organizations.
- **Donations:** Solicit individual donations through fundraising campaigns, events, and online platforms.
- **Corporate Sponsorships:** Partner with corporations for sponsorships, corporate social responsibility (CSR) initiatives, and in-kind contributions.
- **Earned Income:** Explore social enterprise models and revenue-generating activities that align with the trust's mission, such as selling sustainable agricultural products or offering training services.

### b. Financial Management:

- Implement robust financial management practices to ensure transparency, accountability, and efficient use of funds.
- Regularly audit financial statements and provide detailed financial reports to stakeholders.

### c. Resource Optimization:

- Maximize the impact of available resources through strategic planning, cost-effective operations, and leveraging partnerships for in-kind support and shared resources.

## 6. Monitoring and Evaluation (M&E)

### a. M&E Framework:

- Develop a comprehensive M&E framework that outlines key performance indicators (KPIs), data collection methods, and evaluation timelines for each project.
- Ensure that the framework aligns with the trust's objectives and provides actionable insights.

### b. Data Collection and Analysis:

- Utilize both qualitative and quantitative data collection methods, including surveys, interviews, focus groups, and field observations.
- Analyze data regularly to assess program performance, identify trends, and make informed decisions.

### c. Impact Assessment:

- Conduct periodic impact assessments to measure the long-term effects of programs on rural communities.
- Use findings to refine strategies, replicate successful initiatives, and address any gaps or challenges.



#### **d. Reporting and Accountability:**

- Maintain transparent reporting practices, sharing M&E results with stakeholders, donors, and the public.
- Use reports to demonstrate accountability, build trust, and attract further support.

### **7. Partnerships and Collaborations**

#### **a. Strategic Alliances:**

- Form strategic alliances with organizations that complement Meri Awaz Trust's expertise and resources, enhancing the overall effectiveness of initiatives.
- Collaborate on joint projects, research, and advocacy efforts to amplify impact.

#### **b. Knowledge Sharing:**

- Engage in knowledge sharing and capacity building with partners to exchange best practices, innovations, and lessons learned.
- Participate in networks, forums, and conferences to stay informed about emerging trends and opportunities.

#### **c. Leveraging Expertise:**

- Tap into the specialized knowledge and skills of partners to enhance program design, implementation, and evaluation.
- Involve partners in training, mentorship, and technical support to strengthen the trust's capabilities.

### **8. Sustainability Strategies**

#### **a. Community Ownership:**

- Foster community ownership of projects by involving local stakeholders in planning, implementation, and management.
- Encourage communities to take responsibility for maintaining and sustaining initiatives beyond the trust's involvement.

#### **b. Capacity Building:**

- Invest in building the capacity of local organizations, leaders, and individuals to ensure that they can continue to drive development independently.
- Provide training, resources, and ongoing support to empower communities to manage their own development initiatives.

#### **c. Environmental Sustainability:**

- Integrate environmentally sustainable practices into all projects, ensuring that development efforts do not compromise the natural resources and ecosystems of rural areas.
- Promote renewable energy, sustainable agriculture, and conservation initiatives to support long-term ecological balance.





**d. Financial Sustainability:**

- Develop diversified and reliable funding streams to ensure the continuity of programs.
- Explore social enterprise models and revenue-generating activities that provide financial support while aligning with the trust's mission.

**e. Policy Advocacy:**

- Advocate for policies that support rural development, education, healthcare, and sustainable livelihoods at local, state, and national levels.
- Engage with policymakers to influence positive changes that benefit rural communities and create an enabling environment for sustainable development.

**9. Technology Utilization**

**a. Digital Tools and Platforms:**

- Leverage digital tools and platforms to enhance program delivery, communication, and data management.
- Implement e-learning platforms, telemedicine services, and digital monitoring systems to increase accessibility and efficiency.

**b. Innovation and Adaptation:**

- Stay abreast of technological advancements and integrate relevant innovations into programs to improve outcomes.
- Encourage a culture of innovation within the organization, fostering the development and testing of new ideas and approaches.

**c. Data-Driven Decision Making:**

- Use data analytics and digital dashboards to inform strategic decisions, optimize resource allocation, and enhance program effectiveness.
- Ensure data security and privacy, maintaining the trust and confidentiality of beneficiaries.

**10. Risk Management**

**a. Risk Identification:**

- Identify potential risks that could impact program implementation, such as financial constraints, political instability, natural disasters, and operational challenges.
- Conduct regular risk assessments to stay proactive in managing potential threats.

**b. Mitigation Strategies:**

- Develop and implement strategies to mitigate identified risks, including contingency planning, diversification of funding sources, and building flexible program designs.
- Train staff and volunteers in risk management practices to enhance organizational resilience.

**c. Crisis Management:**

- Establish protocols for responding to emergencies and unforeseen events, ensuring swift and effective action to minimize impact.
- Maintain communication channels with stakeholders to coordinate responses and provide updates during crises.

**11. Communication and Advocacy**

**a. Internal Communication:**

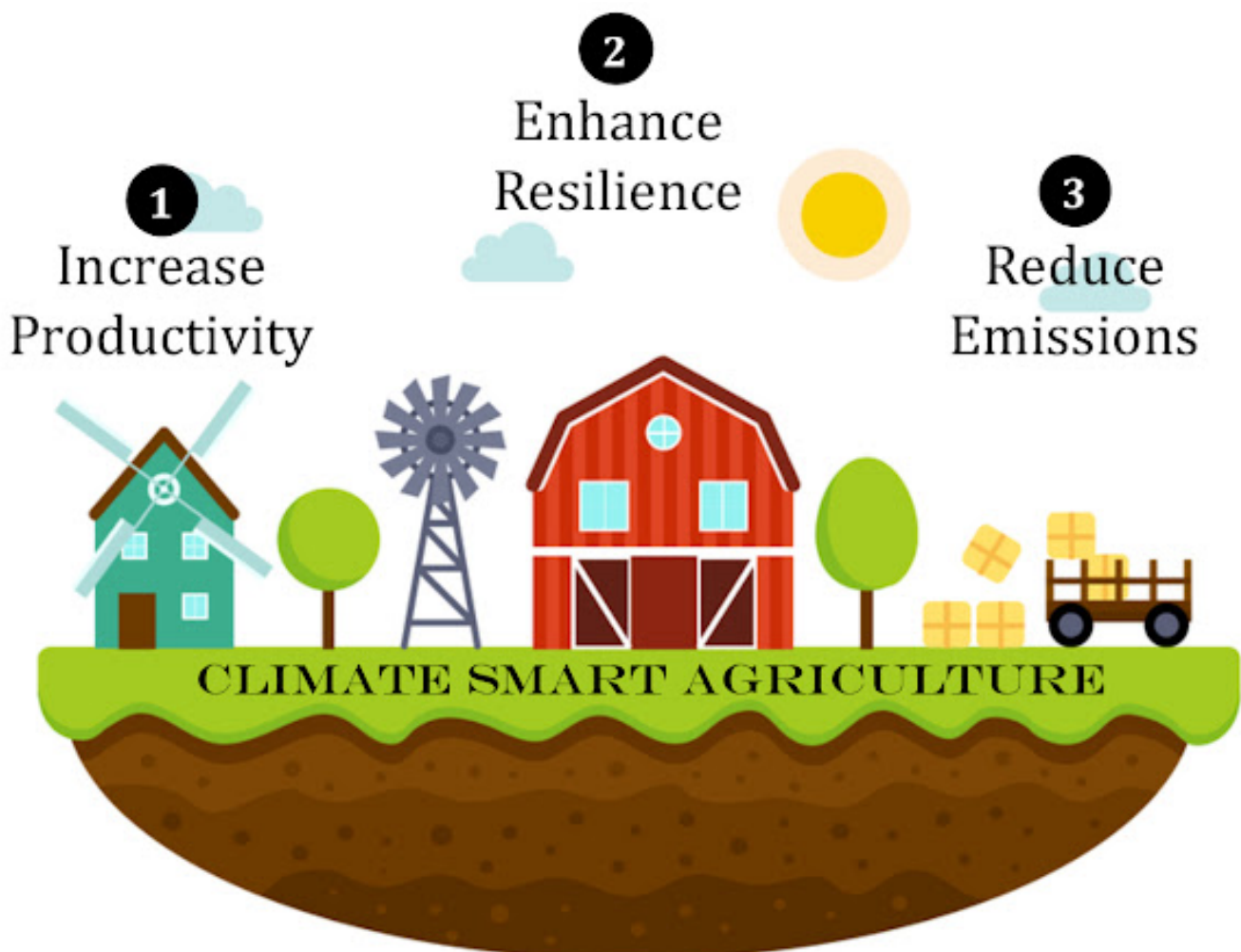
- Foster effective internal communication to ensure that all team members are informed, engaged, and aligned with the trust's goals and activities.
- Use communication tools such as newsletters, intranets, and regular meetings to facilitate information sharing.

**b. External Communication:**

- Develop a comprehensive communication strategy to raise awareness about the trust's mission, programs, and impact.
- Utilize various channels, including social media, websites, newsletters, and community events, to engage with beneficiaries, donors, partners, and the public.

**c. Advocacy Efforts:**

- Advocate for the rights and needs of rural communities through campaigns, policy briefs, and participation in relevant forums.
- Highlight success stories and case studies to demonstrate the effectiveness of the trust's initiatives and inspire broader support.





## Our Core Values

Value	Description
<b>Integrity</b>	We uphold the highest standards of honesty and ethical practices in all our actions and decisions.
<b>Transparency</b>	We maintain open and clear communication with our stakeholders, ensuring accountability in our operations.
<b>Sustainability</b>	We are committed to sustainable development practices that protect the environment and ensure long-term impact.
<b>Empowerment</b>	We empower individuals and communities by providing the tools and opportunities they need to thrive independently.
<b>Innovation</b>	We embrace innovative solutions and technologies to address complex rural challenges effectively.
<b>Inclusivity</b>	We promote inclusivity, ensuring that our programs are accessible to all members of the community regardless of background.

